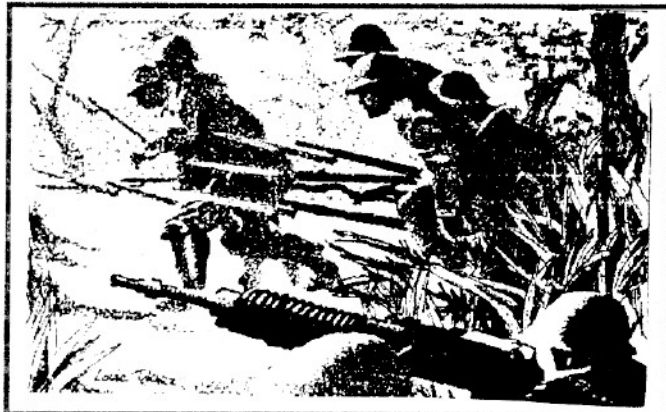


# GENERAL SASAKI'S ATTACK

## ASL SCENARIO ATP4



Munda Trail, New Georgia-- 17 July 1943: Major General Noburo Sasaki realized that he would not be able to stem the American advance along the Munda Trail by offensive means. Nevertheless, he was not going to sit passively and allow the U.S. forces to choose when and where to attack. During the night of July 16-17 he ordered a general offensive aimed at disrupting American plans and supply to their forward units.

### BOARD CONFIGURATION:



(only hexrows A-F are playable)

### BALANCE:

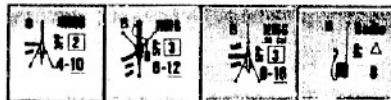
- ☆ U.S. player has Battalion MTR OBA.
- Add two 347 squads to the Japanese OB.

**VICTORY CONDITIONS:** The player controlling a majority of victory points wins at game end. The bridge is worth 2 points and level three hill locations are worth one point each.

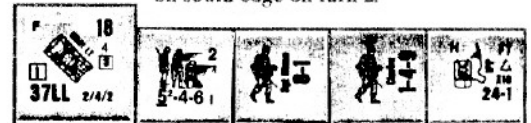
### TURN RECORD CHART

☆ AMERICAN sets up first	1	☆ 2	3	4	5	6	END
● JAPANESE moves first							

F Company, 172nd Regiment [ELR:3] set up anywhere on map; optionally in foxholes if in suitable terrain. {SAN:3}



Battalion Reserves, enter on south edge on turn 2:



Assault Force 229th Infantry Regiment [ELR:4] enter turn 1 on any board edge(s) north of the stream. {SAN:6}



### SPECIAL RULES:

5. Only heroes may use FIs without non-qualified use penalties.

1. EC are moist with no wind at start. The stream is deep. Place overlays: 2 on N8-N9, M3 on oH1-oL2 and Wd2 on oJ1-oK1.

2. PTO terrain is in effect; however, the road does exist, as does the bridge, which is considered a footbridge (B6.44).

3. Due to the muddy, rutted nature and narrow width of the road, normal entrance costs for vehicles are reduced to 3MP when CB and 4MP while BU and using the road. All other road rules apply normally.

4. The U. S. Player receives one module of 80+MM OBA and may designate one pre-registered hex.

**Aftermath:** After 2 weeks of basically mutilating themselves in the New Georgia rain forest, the men of F Company were about to experience another nightmare: Japanese screaming from the jungle. Captain Bunzo Kojima had ordered his 3rd Battalion to break into 200-man assault groups and infiltrate the American lines. One of these groups found F Company finishing another sleepless night, during which they had nervously thrown grenades into friendly foxholes at the slightest sound. The Japanese formed up and launched an attack on the hilltop positions just as dawn broke. After 45 minutes of furious fighting, they retreated into the jungle as quickly as they came, leaving over 100 dead piled up in front of the American positions. The Connecticut Guardsmen were "green" no longer...